

Kitco, Inc.

Running Boards

505 West Dryden
Odessa, MO 64076
Fax (816) 633-4361

TOLL FREE (800) 455-8606

INSTALLATION PACKAGE

BRACKETS	2 - Reg. Cab or 4 - Ext Cab
PINCH WELD PLATE	2 - Reg. Cab or 4 - Ext Cab
BOLT PACK	1
INSTRUCTION SHEET	1

NECESSARY TOOLS

DRILL or SCREW GUN
RATCHET WRENCH w/ 1/2" SOCKET
1/2" COMBINATION WRENCH
SOCKET EXTENSION
SAFETY GLASSES

1. Please thoroughly read all instructions and test fit boards before painting. Mount the running boards as described in previous page of General Instructions.
2. There is one bracket and pinch weld plate per door opening. Attach the pinch weld plate to the bracket with 5/16" nut, bolt and washer as shown in Fig A, Step 1. Position bracket under the door opening where it is most likely to be stepped on from the topside while entering vehicle.
3. Once this position is found, hold securely in place and attach bracket to the reinforced area on the bottom side of the running board, attach with 14 x 3/4 Hex Head wood screws, 2per bracket, as shown in Fig A, STEP 2. **DO NOT TIGHTEN YET!**
4. Secure the topside of bracket to the backside of the rocker panel with 3 - 14 x 1 Self Drilling Hex Head screws, as shown in Fig A, STEP 3. **Tighten these screws firmly into place; now tighten wood screws from previous step 1.**
5. Finish up by attaching Pinch Weld Plate to back side of rocker panel with 2 - Self-drilling screws, as shown in Fig B, STEP 4. **This step is very important and viable for the strength of the bracket. TIGHTEN ALL NUTS, BOLTS AND SCREWS NOW!**
6. Repeat the previous steps on remaining door openings, until all brackets and stiffener hangers are securely attached to running boards and the vehicle under body.
7. TEST BRACKETS: Now that all brackets are in there proper place and secured to the vehicle, stand on the running board and test to make sure everything is snug and very secure.

BRACKET INSTALLATION INSTRUCTIONS

2002-Current DODGE REGULAR & CREW CAB

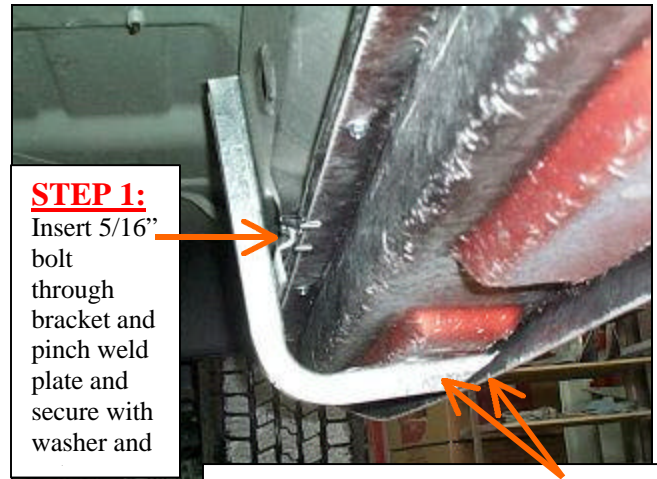


Fig A

STEP 1:
Insert 5/16" bolt through bracket and pinch weld plate and secure with washer and

STEP 2: Insert 2 - 14 x 3/4 wood screws here through bracket into wood reinforced area.

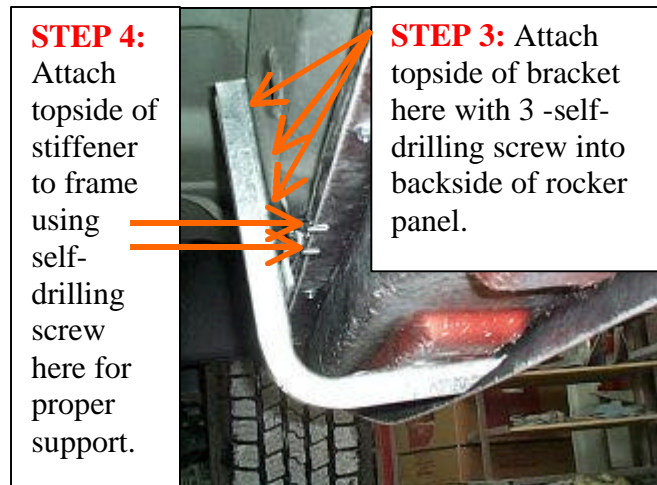


Fig B

STEP 4:
Attach topside of stiffener to frame using self-drilling screw here for proper support.

STEP 3: Attach topside of bracket here with 3 - self-drilling screw into backside of rocker panel.

**QUESTIONS OR PROBLEMS PLEASE CALL
(800) 455-8606**